

USER MANUAL

MCPUFF[®]
OVER

MCPUFF[®]

Thank you for choosing MOPUFF product. Please read this instruction carefully before use to ensure a perfect experience. If there is any additional requirement about this product, please consult the local agent or contact us through our website:
www.mopuff.com

OVERVIEW

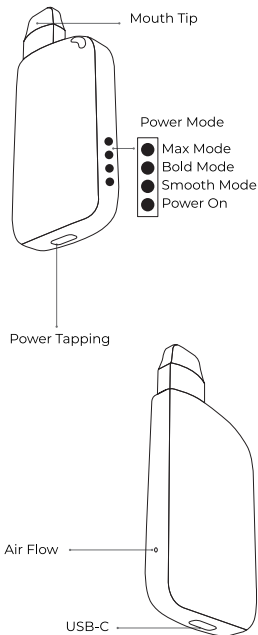
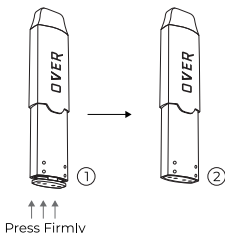


FIGURE 1



SPECIFICATION

Device Dimensions: 103x48.64x25.54mm

Pod Dimensions : 103x48.64x25.54mm

Pod Capacity : 3ml

Battery Capacity : 300mAh

Coil : Mesh Coil

Charging Times : 45-60 minutes

Battery Cycle life : 300 times

USE INSTRUCTIONS

1. Take out the Pod from the package(REFER to FIGURE 1)

Remove the sticker and press firmly the Pod bottom to connect the plug with the flavor section.

2. Insert the Pod into your device

3. Power ON/OFF

Tap quickly 5 times at the bottom part of the device. A light will blink on the side of the device

4. Inhale gently

Start your MOPUFF experience

5. Mode/Power Settings

There are three power modes: 'Smooth Mode', 'Bold Mode', and 'Max Mode'. Tap 3 times each time you want to switch modes, and the light will blink to indicate the selected mode

SAFETY GUIDELINE & WARNING

SAFE USAGE INSTRUCTIONS

1. For adults only (18+ years old).

This product contains nicotine. Nicotine is an addictive chemical and may be harmful to health.

2. Use only compatible pods/cartridges.

Always use pods specifically designed for MOPUFF to ensure safe performance and avoid leaks or damage.

3. Keep out of reach of children and pets.

Store your device and nicotine pods in a secure place to prevent accidental exposure.

4. Avoid contact with water or moisture.

MOPUFF PRO is not waterproof. Make sure your hands are dry before handling the device.

5. Store in a cool, dry environment.

Keep away from direct sunlight, heat sources, or extreme temperatures.

IMPORTANT WARNING

1. Do not use this product if you are:

- Pregnant or breastfeeding
- Suffering from heart disease, stomach or duodenal ulcers, liver or kidney problems, long-term throat disease or difficult breathing due to bronchitis, emphysema or asthma.
- Respiratory issues, or other serious health conditions
- Allergic to nicotine or any ingredients in the pod.

2. Do not attempt to modify or disassemble the device.

Any unauthorized modifications will void the warranty and may lead to malfunction, fire, or explosion.

3. Never use damaged or leaking pods.

This may pose health risks and can damage the device.

4. Do not charge overnight or leave charging unattended.

Unsupervised charging can increase the risk of fire or battery damage.

DISPOSAL GUIDELINE

Do not dispose of the device or used pods in regular trash.

Follow local e-waste and battery disposal regulations. Help protect the environment.

ADDITIONAL NOTICE

MOPUFF is intended for use by adult smokers seeking an alternative to traditional cigarettes. It is not a medical product and should not be used as a smoking cessation tool.

MOPUFF®

www.mopuff.com

